

**ANNEX I**

**SUMMARY OF PRODUCT CHARACTERISTICS**

## 1. NAME OF THE VETERINARY MEDICINAL PRODUCT

EVICTO 15 mg spot on solution for cats and dogs  $\leq 2.5$  kg  
EVICTO 30 mg spot on solution for dogs 2.6 – 5.0 kg  
EVICTO 45 mg spot on solution for cats 2.6 – 7.5 kg  
EVICTO 60 mg spot on solution for cats 7.6 – 10.0 kg  
EVICTO 60 mg spot on solution for dogs 5.1 – 10.0 kg  
EVICTO 120 mg spot on solution for dogs 10.1 – 20.0 kg  
EVICTO 240 mg spot on solution for dogs 20.1 – 40.0 kg  
EVICTO 360 mg spot on solution for dogs 40.1 – 60.0 kg

## 2. QUALITATIVE AND QUANTITATIVE COMPOSITION

Each single-dose (pipette) delivers:

### Active substance:

EVICTO 15 mg for cats and dogs	60 mg/ml solution	Selamectin	15 mg
EVICTO 30 mg for dogs	120 mg/ml solution	Selamectin	30 mg
EVICTO 45 mg for cats	60 mg/ml solution	Selamectin	45 mg
EVICTO 60 mg for cats	60 mg/ml solution	Selamectin	60 mg
EVICTO 60 mg for dogs	120 mg/ml solution	Selamectin	60 mg
EVICTO 120 mg for dogs	120 mg/ml solution	Selamectin	120 mg
EVICTO 240 mg for dogs	120 mg/ml solution	Selamectin	240 mg
EVICTO 360 mg for dogs	120 mg/ml solution	Selamectin	360 mg

### Excipient:

Butylhydroxytoluene 0.8 mg/ml

For the full list of excipients, see section 6.1.

## 3. PHARMACEUTICAL FORM

Spot-on solution.

Colourless to yellow solution.

## 4. CLINICAL PARTICULARS

### 4.1 Target species

Dogs and cats.

### 4.2 Indications for use, specifying the target species

#### Cats and dogs:

- **Treatment and prevention of flea infestations** caused by *Ctenocephalides* spp. for one month following a single administration. This is as a result of the adulticidal, larvicidal and ovicidal properties of the product. The product is ovicidal for 3 weeks after administration. Through a reduction in the flea population, monthly treatment of pregnant and lactating animals will also aid in the prevention of flea infestations in the litter up to seven week of age. The product can be used as part of a treatment strategy for flea allergy dermatitis and through its ovicidal and

larvicidal action may aid in the control of existing environmental flea infestations in area to which the animal has access.

- **Prevention of heartworm disease** caused by *Dirofilaria immitis* with monthly administration. The product may be safely administered to animals infected with adult heartworms, however, it is recommended, in accordance with good veterinary practice, that all animals 6 months of age or more living in countries where a vector exists should be tested for existing adult heartworm infections before beginning medication with the product. It is also recommended that dogs should be tested periodically for adult heartworm infections, as an integral part of a heartworm prevention strategy, even when the product has been administered monthly. This product is not effective against adult *D. immitis*.
- **Treatment of ear mites** (*Otodectes cynotis*).

#### **Cats:**

- Treatment of biting lice infestations (*Felicola subrostratus*)
- Treatment of adult roundworms (*Toxocara cati*)
- Treatment of adult intestinal hookworms (*Ancylostoma tubaeforme*).

#### **Dogs:**

- Treatment of biting lice infestations (*Trichodectes canis*)
- Treatment of sarcoptic mange (caused by *Sarcoptes scabiei*)
- Treatment of adult intestinal roundworms (*Toxocara canis*).

### **4.3 Contraindications**

Do not use in animals under 6 weeks of age.

Do not use in cats that are suffering from concomitant disease, or are debilitated and underweight (for size and age).

Do not use in cases of hypersensitivity to the active substance or to any of the excipients.

### **4.4 Special warnings for each target species**

Animals may be bathed 2 hours after treatment without loss of efficacy.

Do not apply when the animal's hair coat is wet. However, shampooing or soaking the animal 2 or more hours after treatment will not reduce the efficacy of the product.

For ear mite treatment, do not apply directly in the ear canal.

### **4.5 Special precautions for use**

#### Special precautions for use in animals

This veterinary medicinal product is to be applied to the skin surface only. Do not administer orally or parenterally.

Keep treated animals away from fires and other sources of ignition for at least 30 minutes or until the hair coat is dry.

It is important to apply the dose as indicated to minimise the quantity that the animal can lick off. If significant licking does occur, a brief period of hypersalivation may rarely be observed in cats.

### Special precautions to be taken by the person administering the veterinary medicinal product to animals

This product is highly flammable; keep away from heat, sparks, open flames or other sources of ignition. Do not smoke, eat or drink while handling the product.

This product is a skin and eye irritant. Wash hands after use and wash off any product in contact with the skin immediately with soap and water. If accidental eye exposure occurs, flush the eyes immediately with water and seek medical advice immediately and show the package leaflet or the label to the physician.

Avoid direct contact with treated animals until the application site is dry. On the day of treatment, children must not handle treated animals and the animals should not be permitted to sleep with their owners, especially children. Used applicators should be disposed of immediately and not left within the sight or reach of children.

People with sensitive skin or known allergy to veterinary medicinal product of this type should handle the product with caution.

### Other precautions

Do not allow treated animals to bathe in water courses until at least two hours after treatment administration.

## **4.6 Adverse reactions (frequency and seriousness)**

Mild transient alopecia at the site of application has been reported rarely after use of the veterinary medicinal product in cats. Transient focal irritation may also be observed very rarely. The alopecia and irritation are normally self-resolving, but symptomatic therapy may be applicable in some circumstances.

Local temporary clumping of the hair at the application site and/or an occasional appearance of a small quantity of a white powder has been reported rarely.

This is normal and will disappear typically within 24 hours of treatment administration and does not affect either the safety or efficacy of the veterinary medicinal product.

If significant licking does occur, a brief period of hypersalivation may rarely be observed in cats.

As with other macrocyclic lactones, reversible neurological signs, including seizures, have been very rarely observed after use of the veterinary medicinal product in both dogs and cats.

The frequency of adverse reactions is defined using the following convention:

- very common (more than 1 in 10 animals treated displaying adverse reaction(s))
- common (more than 1 but less than 10 animals in 100 animals treated)
- uncommon (more than 1 but less than 10 animals in 1,000 animals treated)
- rare (more than 1 but less than 10 animals in 10,000 animals treated)
- very rare (less than 1 animal in 10,000 animals treated, including isolated reports).

## **4.7 Use during pregnancy, lactation or lay**

The product can be used in breeding, pregnant and lactating cats and dogs.

## **4.8 Interaction with other medicinal products and other forms of interaction**

None known

## **4.9 Amounts to be administered and administration route**

The product should be administered as a single application of a single dose delivering a minimum of 6 mg/kg selamectin. When concurrent infestations or infections in the same animal are to be treated with the veterinary medicinal product, only one application of the recommended 6 mg/kg dose should be administered at any one time. The appropriate length of the treatment period for individual parasites is specified below.

Administer in accordance with the following table:

<b>Cats (kg)</b>	<b>Product</b>	<b>Mg of selamectin dispensed</b>	<b>Potency (mg/ml)</b>	<b>Administered volume (nominal pipette size, ml)</b>
≤ 2.5	1 pipette of Evicto 15 mg for cats and dogs ≤2.5 kg	15	60	0.25
2.6-7.5	1 pipette of Evicto 45 mg for cats 2.6-7.5 kg	45	60	0.75
7.6-10.0	1 pipette of Evicto 60 mg for cats 7.6-10.0kg	60	60	1.0
> 10	Appropriate combination of pipettes	Appropriate combination of pipettes	60	Appropriate combination of pipettes

<b>Dogs (kg)</b>	<b>Product</b>	<b>Mg of selamectin dispensed</b>	<b>Potency (mg/ml)</b>	<b>Administered volume (nominal pipette size, ml)</b>
≤ 2.5	1 pipette of Evicto 15 mg for cats and dogs ≤2.5 kg	15	60	0.25
2.6-5.0	1 pipette of Evicto 30 mg for dogs 2.6-5.0 kg	30	120	0.25
5.1-10.0	1 pipette of Evicto 60 mg for dogs 5.1-10.0 kg	60	120	0.5
10.1-20.0	1 pipette of Evicto 120 mg for dogs 10.1-20.0 kg	120	120	1.0
20.1-40.0	1 pipette of Evicto 240 mg for dogs 20.1-40.0 kg	240	120	2.0
40.1-60.0	1 pipette of Evicto 360 mg for dogs 40.1-60.0 kg	360	120	3.0
> 60	Appropriate combination of pipettes	Appropriate combination of pipettes	60/120	Appropriate combination of pipettes

### **Flea treatment and prevention (cats and dogs)**

Following administration of the veterinary medicinal product, the adult fleas on the animal are killed, no viable eggs are produced, and larvae (found only in the environment) are also killed. This stops flea reproduction, breaks the flea lifecycle and may aid in the control of existing environmental flea infestations in areas to which the animal has access.

For the prevention of flea infestations, the veterinary medicinal product should be administered at monthly intervals throughout the flea season, starting one month before fleas become active. Through a reduction in the flea population, monthly treatment of pregnant and lactating animals will aid prevention of flea infestations in the litter up to seven weeks of age.

For use as part of a treatment strategy for flea allergy dermatitis the veterinary medicinal product should be administered at monthly intervals.

### **Prevention of heartworm disease (cats and dogs)**

The veterinary medicinal product may be administered year-round or at least within one month of the animal's first exposure to mosquitoes and monthly thereafter until the end of the mosquito season.

The final dose must be given within one month after the last exposure to mosquitoes. If a dose is missed and a monthly interval between dosing is exceeded then immediate administration of the veterinary medicinal product and resumption of monthly dosing will minimise the opportunity for the development of adult heartworms. When replacing another heartworm preventive veterinary medicinal product in a heartworm disease prevention programme, the first dose of the veterinary medicinal product must be given within a month of the last dose of the former medication.

### **Treatment of roundworm infections (cats and dogs)**

A single dose of the veterinary medicinal product should be administered.

### **Treatment of biting lice (cats and dogs)**

A single dose of the veterinary medicinal product should be administered.

### **Treatment of ear mites (cats)**

A single dose of the veterinary medicinal product should be administered.

### **Treatment of ear mites (dogs)**

A single dose of the veterinary medicinal product should be administered. Loose debris should be gently removed from the external ear canal at the time of treatment. A further veterinary examination 30 days after treatment is recommended as some animals may require a second treatment/

### **Treatment of hookworm infections (cats)**

A single dose of the veterinary medicinal product should be administered.

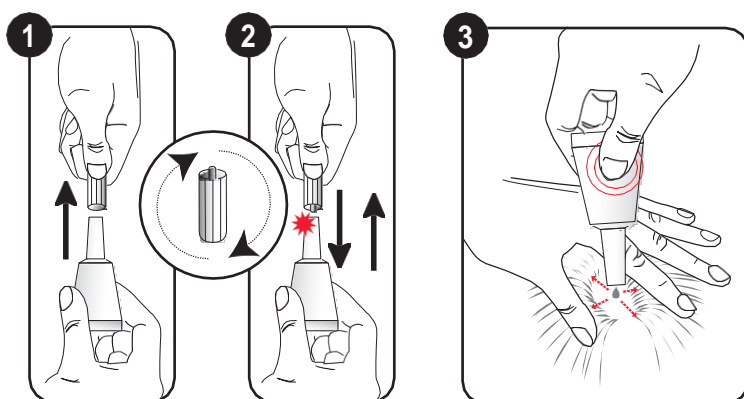
### **Treatment of sarcoptic mange (dogs)**

For complete elimination of the mites, a single dose of the veterinary medicinal product should be administered for two consecutive months.

### Method and route of administration:

Spot-on use.

Apply to the skin at the base of the neck in front of the shoulder blades.



#### How to apply :

Remove the product pipette from its protective package.

1 - Holding the pipette upright, remove the cap.

2 - Invert the cap and place other end back onto applicator tip. Push the cap down to break the applicator seal.

Remove the cap prior to treatment application.

3 - Part the hair at the base of your animal's neck in front of the shoulder blades to expose a small area of skin.

Apply the tip of the product pipette directly to the skin without massaging.

Squeeze the pipette firmly to empty the contents in one spot. Avoid contact between the product and your fingers.

#### **4.10 Overdose (symptoms, emergency procedures, antidotes), if necessary**

No undesirable effects were observed after the administration of 10 times the recommended dose of selamectin.

Selamectin was administered at 3 times the recommended dose to cats and dogs infected with adult heartworms and no undesirable effects were observed. Selamectin was also administered at 3 times the recommended dose to breeding male and female cats and dogs, including pregnant and lactating females nursing their litters and at 5 times the recommended dose to ivermectin-sensitive Collies, and no undesirable effects were observed.

#### **4.11 Withdrawal period(s)**

Not applicable.

### **5. PHARMACOLOGICAL PROPERTIES**

Pharmacotherapeutic group: antiparasitic products, insecticides and repellents, macrocyclic lactones.  
ATC vet code: QP54AA05.

#### **5.1 Pharmacodynamic properties**

Selamectin is a semi-synthetic compound of the avermectin class. Selamectin paralyses and/or kills a wide range of invertebrate parasites through interference with their chloride channel conductance causing disruption of normal neurotransmission. This inhibits the electrical activity of nerve cells in nematodes and muscle cells in arthropods leading to their paralysis and/or death.

Selamectin has adulticidal, ovicidal and larvicidal activity against fleas. Therefore, it effectively breaks the flea life cycle by killing adults (on the animal), preventing the hatching of eggs (on the animal and in its environment) and by killing larvae (environment only). Debris from selamectin-treated pets kills flea eggs and larvae not previously exposed to selamectin and thus may aid in the control of existing environmental flea infestations in areas to which the animal has access.

Activity has also been demonstrated against heartworm larvae.

#### **5.2 Pharmacokinetic particulars**

Following spot on administration selamectin is absorbed from the skin reaching maximum plasma concentrations approximately 1 and 3 days after administration in cats and dogs respectively.

Following absorption from the skin selamectin distributes systemically and is slowly eliminated from plasma as manifested in detectable plasma concentrations in dogs and cats 30 days after

administration of a single topical dose at 6 mg/kg. The prolonged persistence and slow elimination of selamectin from plasma is reflected in the terminal elimination half-life values of 8 and 11 days in cats and dogs respectively. The systemic persistence of selamectin in plasma and the lack of extensive metabolism provide effective concentrations of selamectin for the duration of the inter-dosing interval (30 days).

## **6. PHARMACEUTICAL PARTICULARS**

### **6.1 List of excipients**

Butylhydroxytoluene  
Dipropylene glycol methyl ether  
Isopropyl alcohol

### **6.2 Major incompatibilities**

Not applicable.

### **6.3 Shelf life**

Shelf life of the veterinary medicinal product as packaged for sale: 3 years

### **6.4. Special precautions for storage**

This veterinary medicinal product does not require any special temperature storage conditions. Store in the unopened sachet in a dry place to protect from light and moisture.

### **6.5 Nature and composition of immediate packaging**

The product is available in packs of one, four and twenty-four (all pipette sizes). The veterinary medicinal product is in polypropylene single-dose pipettes in an aluminium sachet overwrap.

1 pipette of EVICTO 15 mg for cats and dogs contains 0.25 ml of 60 mg/ml solution  
1 pipette of EVICTO 45 mg for cats contains 0.75 ml of 60 mg/ml solution  
1 pipette of EVICTO 60 mg for cats contains 1.0 ml of 60 mg/ml solution  
1 pipette of EVICTO 30 mg for dogs contains 0.25 ml of 120 mg/ml solution  
1 pipette of EVICTO 60 mg for dogs contains 0.5 ml of 120 mg/ml solution  
1 pipette of EVICTO 120 mg for dogs contains 1.0 ml of 120 mg/ml solution  
1 pipette of EVICTO 240 mg for dogs contains 2.0 ml of 120 mg/ml solution  
1 pipette of EVICTO 360 mg for dogs contains 3.0 ml of 120 mg/ml solution.

Not all pack sizes may be marketed.

### **6.6 Special precautions for the disposal of unused veterinary medicinal product or waste materials derived from the use of such products**

Any unused veterinary medicinal product or waste materials derived from such veterinary medicinal product should be disposed of in accordance with local requirements.

The product should not enter water courses as this may be dangerous for fish and other aquatic organisms. Containers and residual contents should be disposed of along with collected domestic refuse to avoid contamination of any water courses.

## **7. MARKETING AUTHORISATION HOLDER**



VIRBAC  
1ère avenue – 2065m – LID  
06516 Carros  
France

**8. MARKETING AUTHORISATION NUMBER(S)**

EU/2/1/19/242/001-024

**9. DATE OF FIRST AUTHORISATION/RENEWAL OF THE AUTHORISATION**

Date of first authorisation: 19/07/2019

**10 DATE OF REVISION OF THE TEXT**

Detailed information on this veterinary medicinal product is available on the website of the European Medicines Agency (<http://www.ema.europa.eu/>).

**PROHIBITION OF SALE, SUPPLY AND/OR USE**

Not applicable.

## **ANNEX II**

- A. MANUFACTURER RESPONSIBLE FOR BATCH RELEASE**
- B. CONDITIONS OR RESTRICTIONS REGARDING SUPPLY AND USE**
- C. STATEMENT OF THE MRLs**
- D. OTHER CONDITIONS AND REQUIREMENTS OF THE MARKETING AUTHORISATION**

**A. MANUFACTURER RESPONSIBLE FOR BATCH RELEASE**

Name and address of the manufacturer responsible for batch release

VIRBAC  
1ère avenue – 2065m – LID  
06516 Carros  
France

**B. CONDITIONS OR RESTRICTIONS REGARDING SUPPLY AND USE**

Veterinary medicinal product subject to prescription.

**C. STATEMENT OF THE MRLs**

Not applicable

**D. OTHER CONDITIONS AND REQUIREMENTS OF THE MARKETING AUTHORISATION**

Specific pharmacovigilance requirements:

PSUR submissions shall be synchronised with those for the reference product.

**ANNEX III**  
**LABELLING AND PACKAGE LEAFLET**

## **A. LABELLING**

**PARTICULARS TO APPEAR ON THE OUTER PACKAGE**

**CARTON 15 MG (1, 4 AND 24 PIPETTES)**

**1. NAME OF THE VETERINARY MEDICINAL PRODUCT**

Evicto 15 mg spot-on solution for cats and dogs  $\leq 2.5$  kg  
selamectin

**2. STATEMENT OF ACTIVE AND OTHER SUBSTANCES**

Selamectin 15 mg

**3. PHARMACEUTICAL FORM**

Spot-on solution.

**4. PACKAGE SIZE**

1 pipette  
4 pipettes  
24 pipettes

x 0.25 ml

**5. TARGET SPECIES**

Cat, dog

**6. INDICATION(S)**

**7. METHOD AND ROUTE(S) OF ADMINISTRATION**

Spot-on use.  
Read the package leaflet before use.

**8. WITHDRAWAL PERIOD**

**9. SPECIAL WARNING(S), IF NECESSARY**

Read the package leaflet before use.

**10. EXPIRY DATE**

EXP {month, year}

**11. SPECIAL STORAGE CONDITIONS**

Store in the unopened sachet in a dry place to protect from light and moisture.

**12. SPECIAL PRECAUTIONS FOR THE DISPOSAL OF UNUSED PRODUCTS OR WASTE MATERIALS, IF ANY**

Disposal: read package leaflet.

**13. THE WORDS “FOR ANIMAL TREATMENT ONLY” AND CONDITIONS OR RESTRICTIONS REGARDING SUPPLY AND USE, IF APPLICABLE**

For animal treatment only. To be supplied only on veterinary prescription.

**14. THE WORDS “KEEP OUT OF THE SIGHT AND REACH OF CHILDREN”**

Keep out of the sight and reach of children.

**15. NAME AND ADDRESS OF THE MARKETING AUTHORISATION HOLDER**

VIRBAC  
1ère avenue – 2065m – LID  
06516 Carros  
France

**16. MARKETING AUTHORISATION NUMBER(S)**

EU/2/19/242/001  
EU/2/19/242/002  
EU/2/19/242/003

**17. MANUFACTURER’S BATCH NUMBER**

Lot {number}

**PARTICULARS TO APPEAR ON THE OUTER PACKAGE**

**CARTON 30mg, 60mg, 120mg, 240mg, 360mg (1, 4 AND 24 PIPETTES)**

**1. NAME OF THE VETERINARY MEDICINAL PRODUCT**

Evicto 30 mg spot-on solution for dogs 2.6–5.0 kg  
Evicto 60 mg spot-on solution for dogs 5.1–10.0 kg  
Evicto 120 mg spot-on solution for dogs 10.1–20.0 kg  
Evicto 240 mg spot-on solution for dogs 20.1–40.0 kg  
Evicto 360 mg spot-on solution for dogs 40.1–60.0 kg  
selamectin

**2. STATEMENT OF ACTIVE AND OTHER SUBSTANCES**

Selamectin 30 mg  
Selamectin 60 mg  
Selamectin 120 mg  
Selamectin 240 mg  
Selamectin 360 mg

**3. PHARMACEUTICAL FORM**

Spot-on solution.

**4. PACKAGE SIZE**

1 pipette  
4 pipettes  
24 pipettes

x 0.25 ml  
x 0.5 ml  
x 1.0 ml  
x 2.0 ml  
x 3.0 ml

**5. TARGET SPECIES**

Dog

**6. INDICATION(S)**



**7. METHOD AND ROUTE(S) OF ADMINISTRATION**

Spot-on use.

Read the package leaflet before use.

**8. WITHDRAWAL PERIOD**

**9. SPECIAL WARNING(S), IF NECESSARY**

Read the package leaflet before use.

**10. EXPIRY DATE**

EXP {month, year}

**11. SPECIAL STORAGE CONDITIONS**

Store in the unopened sachet in a dry place to protect from light and moisture.

**12. SPECIAL PRECAUTIONS FOR THE DISPOSAL OF UNUSED PRODUCTS OR WASTE MATERIALS, IF ANY**

Disposal: read package leaflet.

**13. THE WORDS “FOR ANIMAL TREATMENT ONLY” AND CONDITIONS OR RESTRICTIONS REGARDING SUPPLY AND USE, IF APPLICABLE**

For animal treatment only. To be supplied only on veterinary prescription.

**14. THE WORDS “KEEP OUT OF THE SIGHT AND REACH OF CHILDREN”**

Keep out of the sight and reach of children.

**15. NAME AND ADDRESS OF THE MARKETING AUTHORISATION HOLDER**

VIRBAC  
1ère avenue – 2065m – LID  
06516 Carros  
France

**16. MARKETING AUTHORISATION NUMBER(S)**

EU/2/19/242/010  
EU/2/19/242/011  
EU/2/19/242/012

EU/2/19/242/013  
EU/2/19/242/014  
EU/2/19/242/015

EU/2/19/242/016  
EU/2/19/242/017  
EU/2/19/242/018

EU/2/19/242/019  
EU/2/19/242/020  
EU/2/19/242/021

EU/2/19/242/022  
EU/2/19/242/023  
EU/2/19/242/024

<b>17. MANUFACTURER'S BATCH NUMBER</b>
--

Lot {number}

**PARTICULARS TO APPEAR ON THE OUTER PACKAGE**  
**CARTON 45mg, 60mg (1, 4 AND 24 PIPETTES)**

**1. NAME OF THE VETERINARY MEDICINAL PRODUCT**

Evicto 45 mg spot-on solution for cats 2.6–7.5 kg  
Evicto 60 mg spot-on solution for cats 7.6–10.0 kg  
selamectin

**2. STATEMENT OF ACTIVE AND OTHER SUBSTANCES**

Selamectin 45 mg  
Selamectin 60 mg

**3. PHARMACEUTICAL FORM**

Spot-on solution.

**4. PACKAGE SIZE**

1 pipette  
4 pipettes  
24 pipettes

x 0.75 ml  
x 1.0 ml

**5. TARGET SPECIES**

Cat

**6. INDICATION(S)**

**7. METHOD AND ROUTE(S) OF ADMINISTRATION**

Spot-on use.  
Read the package leaflet before use.

**8. WITHDRAWAL PERIOD**

**9. SPECIAL WARNING(S), IF NECESSARY**

Read the package leaflet before use.

**10. EXPIRY DATE**

EXP {month, year}

**11. SPECIAL STORAGE CONDITIONS**

Store in the unopened sachet in a dry place to protect from light and moisture.

**12. SPECIAL PRECAUTIONS FOR THE DISPOSAL OF UNUSED PRODUCTS OR WASTE MATERIALS, IF ANY**

Disposal: read package leaflet.

**13. THE WORDS “FOR ANIMAL TREATMENT ONLY” AND CONDITIONS OR RESTRICTIONS REGARDING SUPPLY AND USE, IF APPLICABLE**

For animal treatment only. To be supplied only on veterinary prescription.

**14. THE WORDS “KEEP OUT OF THE SIGHT AND REACH OF CHILDREN”**

Keep out of the sight and reach of children.

**15. NAME AND ADDRESS OF THE MARKETING AUTHORISATION HOLDER**

VIRBAC  
1ère avenue – 2065m – LID  
06516 Carros  
France

**16. MARKETING AUTHORISATION NUMBER(S)**

EU/2/19/242/004  
EU/2/19/242/005  
EU/2/19/242/006

EU/2/19/242/007  
EU/2/19/242/008  
EU/2/19/242/009

<b>17. MANUFACTURER'S BATCH NUMBER</b>
--

Lot {number}

**MINIMUM PARTICULARS TO APPEAR ON SMALL IMMEDIATE PACKAGING UNITS**  
**Sachets 15mg, 30mg, 45mg, 60mg, 120mg, 240mg, 360mg**

**1. NAME OF THE VETERINARY MEDICINAL PRODUCT**

Evicto 15 mg spot-on solution for cats and dogs  $\leq 2.5$  kg  
Evicto 30 mg spot-on solution for dogs 2.6–5.0 kg  
Evicto 45 mg spot-on solution for cats 2.6–7.5 kg  
Evicto 60 mg spot-on solution for cats 7.6–10.0 kg  
Evicto 60 mg spot-on solution for dogs 5.1–10.0 kg  
Evicto 120 mg spot-on solution for dogs 10.1–20.0 kg  
Evicto 240 mg spot-on solution for dogs 20.1–40.0 kg  
Evicto 360 mg spot-on solution for dogs 40.1–60.0 kg



selamectin

**2. QUANTITY OF THE ACTIVE SUBSTANCE(S)**

15 mg selamectin  
30 mg selamectin  
45 mg selamectin  
60 mg selamectin  
120 mg selamectin  
240 mg selamectin  
360 mg selamectin

**3. CONTENTS BY WEIGHT, BY VOLUME OR BY NUMBER OF DOSES**

**4. ROUTE(S) OF ADMINISTRATION**

Spot-on use

**5. WITHDRAWAL PERIOD**

**6. BATCH NUMBER**

Lot {number}

**7. EXPIRY DATE**

EXP {month, year}

<b>8. THE WORDS “FOR ANIMAL TREATMENT ONLY”</b>
---

For animal treatment only.

## **B. PACKAGE LEAFLET**



**PACKAGE LEAFLET:  
Evicto spot-on solution**

**1. NAME AND ADDRESS OF THE MARKETING AUTHORISATION HOLDER AND OF THE MANUFACTURING AUTHORISATION HOLDER RESPONSIBLE FOR BATCH RELEASE, IF DIFFERENT**

Marketing authorisation holder and manufacturer responsible for batch release:

VIRBAC

1ère avenue – 2065m – LID

06516 Carros

France

**2. NAME OF THE VETERINARY MEDICINAL PRODUCT**

Evicto 15 mg spot-on solution for cats and dogs ≤ 2.5 kg

Evicto 30 mg spot-on solution for dogs 2.6–5.0 kg

Evicto 45 mg spot-on solution for cats 2.6–7.5 kg

Evicto 60 mg spot-on solution for cats 7.6–10.0 kg

Evicto 60 mg spot-on solution for dogs 5.1–10.0 kg

Evicto 120 mg spot-on solution for dogs 10.1–20.0 kg

Evicto 240 mg spot-on solution for dogs 20.1–40.0 kg

Evicto 360 mg spot-on solution for dogs 40.1–60.0 kg

selamectin

**3. STATEMENT OF THE ACTIVE SUBSTANCE(S) AND OTHER INGREDIENT(S)**

Each single-dose (pipette) delivers:

Evicto 15 mg for cats and dogs	60 mg/ml solution	Selamectin	15 mg
Evicto 30 mg for dogs	120 mg/ml solution	Selamectin	30 mg
Evicto 45 mg for cats	60 mg/ml solution	Selamectin	45 mg
Evicto 60 mg for cats	60 mg/ml solution	Selamectin	60 mg
Evicto 60 mg for dogs	120 mg/ml solution	Selamectin	60 mg
Evicto 120 mg for dogs	120 mg/ml solution	Selamectin	120 mg
Evicto 240 mg for dogs	120 mg/ml solution	Selamectin	240 mg
Evicto 360 mg for dogs	120 mg/ml solution	Selamectin	360 mg

**Excipients:**

Butylated hydroxytoluene 0.8 mg/ml.

Colourless to yellow solution.

**4. INDICATION(S)**

**Cats and dogs:**

- **Treatment and prevention of flea infestations** caused by *Ctenocephalides* spp. for one month following a single administration. This is as a result of the adulticidal, larvicidal and ovicidal properties of the product. The product is ovicidal for 3 weeks after administration. Through a

reduction in the flea population, monthly treatment of pregnant and lactating animals will also aid in the prevention of flea infestations in the litter up to seven weeks of age. The product can be used as part of a treatment strategy for flea allergy dermatitis and through its ovicidal and larvicidal action may aid in the control of existing environmental flea infestations in areas to which the animal has access.

- **Prevention of heartworm disease** caused by *Dirofilaria immitis* with monthly administration. the product may be safely administered to animals infected with adult heartworms, however, it is recommended, in accordance with good veterinary practice, that all animals 6 months of age or more living in countries where a vector exists should be tested for existing adult heartworm infections before beginning medication with the product. It is also recommended that dogs should be tested periodically for adult heartworm infections, as an integral part of a heartworm prevention strategy, even when the product has been administered monthly. This veterinary medicinal product is not effective against adult *D. immitis*.
- **Treatment of ear mites** (*Otodectes cynotis*).

#### Cats:

- Treatment of biting lice infestations (*Felicola subrostratus*)
- Treatment of adult roundworms (*Toxocara cati*)
- Treatment of adult intestinal hookworms (*Ancylostoma tubaeforme*).

#### Dogs:

- Treatment of biting lice infestations (*Trichodectes canis*)
- Treatment of sarcoptic mange (caused by *Sarcoptes scabiei*)
- Treatment of adult intestinal roundworms (*Toxocara canis*).

## 5. CONTRAINDICATIONS

Do not use in animals under 6 weeks of age. Do not use in cats that are suffering from concomitant disease, or are debilitated and underweight (for size and age). Do not use in cases of hypersensitivity to the active substance or to any of the excipients.

## 6. ADVERSE REACTIONS

Mild transient alopecia at the site of application has been reported rarely after use of the veterinary medicinal product in cats. Transient focal irritation may also be observed. The alopecia and irritation are normally self-resolving, but symptomatic therapy may be applicable in some circumstances.

Local temporary clumping of the hair at the application site and/or an occasional appearance of a small quantity of a white powder has been reported rarely. This is normal and will disappear typically within 24 hours of treatment administration and does not affect either the safety or efficacy of the veterinary medicinal product.

If significant licking does occur, a brief period of hypersalivation may rarely be observed in cats. As with other macrocyclic lactones, reversible neurological signs, including seizures, have been very rarely observed after use of the veterinary medicinal product in both dogs and cats.

The frequency of adverse reactions is defined using the following convention:

- very common (more than 1 in 10 animals treated displaying adverse reaction(s))
- common (more than 1 but less than 10 animals in 100 animals treated)
- uncommon (more than 1 but less than 10 animals in 1,000 animals treated)
- rare (more than 1 but less than 10 animals in 10,000 animals treated)
- very rare (less than 1 animal in 10,000 animals treated, including isolated reports).

If you notice any side effects, even those not already listed in this package leaflet or you think that the medicine has not worked, please inform your veterinary surgeon.

## 7. TARGET SPECIES

Cats and/or dogs.

## 8. DOSAGE FOR EACH SPECIES, ROUTE(S) AND METHOD OF ADMINISTRATION

Spot-on use.

Apply to the skin at the base of the neck in front of the shoulder blades.

The product should be administered topically as a single application of a single-dose delivering a minimum of 6 mg/kg selamectin. When concurrent infestations or infections in the same animal are to be treated with the veterinary medicinal product, only one application of the recommended 6 mg/kg dose should be administered at any one time. The appropriate length of the treatment period for individual parasites is specified below.

Administer the product in accordance with the following table:

Cats (kg)	Product	Mg of selamectin dispensed	Potency (mg/ml)	Administered volume (nominal pipette size, ml)
≤ 2.5	1 pipette of Evicto 15 mg for cats and dogs ≤2.5 kg	15	60	0.25
2.6-7.5	1 pipette of Evicto 45 mg for cats 2.6-7.5 kg	45	60	0.75
7.6-10.0	1 pipette of Evicto 60 mg for cats 7.6-10.0kg	60	60	1.0
> 10	Appropriate combination of pipettes	Appropriate combination of pipettes	60	Appropriate combination of pipettes

Dogs (kg)	Product	Mg of selamectin dispensed	Potency (mg/ml)	Administered volume (nominal pipette size, ml)
≤ 2.5	1 pipette of Evicto 15 mg for cats and dogs ≤2.5 kg	15	60	0.25
2.6-5.0	1 pipette of Evicto 30 mg for dogs 2.6-5.0 kg	30	120	0.25
5.1-10.0	1 pipette of Evicto 60 mg for dogs 5.1-10.0 kg	60	120	0.5
10.1-20.0	1 pipette of Evicto 120 mg for dogs 10.1-20.0 kg	120	120	1.0
20.1-40.0	1 pipette of Evicto 240 mg for dogs 20.1-40.0 kg	240	120	2.0

40.1-60.0	1 pipette of Evicto 360 mg for dogs 40.1-60.0 kg	360	120	3.0
> 60	Appropriate combination of pipettes	Appropriate combination of pipettes	60/120	Appropriate combination of pipettes

### **Flea treatment and prevention (cats and dogs)**

#### Animals older than six weeks of age:

Following administration of the veterinary medicinal product to the animal, adult fleas and larvae are killed and no viable eggs are produced. This stops flea reproduction and may aid in the control of existing environmental flea infestations in areas to which the animal has access.

For the prevention of flea infestations, the veterinary medicinal product should be administered to the animal at monthly intervals throughout the flea season, starting one month before fleas become active. This ensures that fleas infesting the animal are killed, no viable flea eggs are produced by these fleas, and larvae (found only in the environment) are also killed. This breaks the flea life cycle and prevents flea infestations.

For use as part of a treatment strategy for flea allergy dermatitis the veterinary medicinal product should be administered at monthly intervals.

#### Treatment of pregnant and lactating animals to prevent flea infestations in puppies and kittens:

Through a reduction in the flea population, monthly treatment of pregnant and lactating animals will aid prevention of flea infestation in the litter up to seven weeks of age.

### **Prevention of heartworm disease (cats and dogs)**

The veterinary medicinal product may be administered year-round or at least within one month of the animal's first exposure to mosquitoes and monthly thereafter until the end of the mosquito season. The final dose must be given within one month after the last exposure to mosquitoes. If a dose is missed and a monthly interval between dosing is exceeded then immediate administration of the veterinary medicinal product and resumption of monthly dosing will minimise the opportunity for the development of adult heartworms. When replacing another heartworm preventive product in a heartworm disease prevention programme, the first dose of the veterinary medicinal product must be given within a month of the last dose of the former medication.

### **Treatment of roundworm infections (cats and dogs)**

A single dose of the veterinary medicinal product should be administered.

### **Treatment of biting lice (cats and dogs)**

A single dose of the veterinary medicinal product should be administered.

### **Treatment of ear mites (cats)**

A single dose of the veterinary medicinal product should be administered.

### **Treatment of ear mites (dogs)**

A single dose of the veterinary medicinal product should be administered. Loose debris should be gently removed from the external ear canal at each treatment. A further veterinary examination 30 days after treatment is recommended as some animals may require a second treatment.

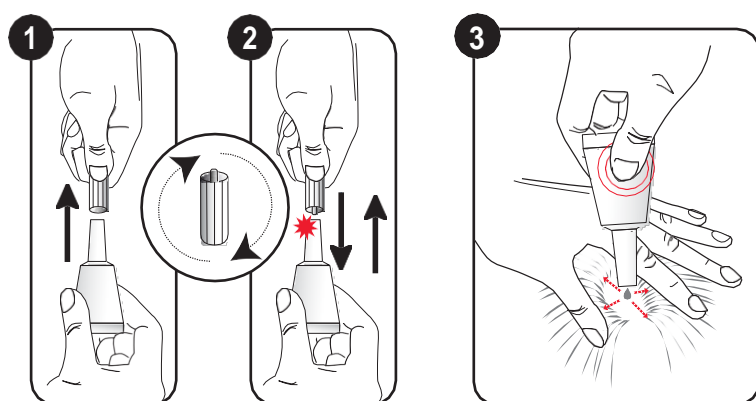
#### **Treatment of hookworm infections (cats)**

A single dose of the veterinary medicinal product should be administered.

#### **Treatment of sarcoptic mange (dogs)**

For complete elimination of the mites, a single dose of the veterinary medicinal product should be administered for two consecutive months.

### **9. ADVICE ON CORRECT ADMINISTRATION**



Remove the pipette from its protective package

1 - Holding the pipette upright, remove the cap.  
Invert the cap and place other end back onto applicator tip.  
Push the cap down to break the applicator seal.

2 - Remove the cap prior to treatment application.

3 - Part the hair at the base of your animal's neck in front of the shoulder blades to expose a small area of skin.

Apply the tip of the pipette directly to the skin without massaging.

Squeeze the pipette firmly to empty the contents in one spot.

Avoid contact between the product and your fingers.

### **10. WITHDRAWAL PERIOD**

Not applicable.

### **11. SPECIAL STORAGE PRECAUTIONS**

Keep out of the sight and reach of children.

This veterinary medicinal product does not require any special temperature storage conditions. Store in the unopened sachet in a dry place to protect from light and moisture.

Do not use this veterinary medicinal product after the expiry date which is stated on the pipette, sachet and carton after EXP. The expiry date refers to the last day of that month.

## **12. SPECIAL WARNING(S)**

### Special warnings for each target species:

Animals may be bathed 2 hours after treatment without loss of efficacy.

Do not apply when the animal's hair coat is wet. However, shampooing or soaking the animal 2 or more hours after treatment will not reduce the efficacy of the product.

For ear mite treatment, do not apply directly to the ear canal.

### Special precautions for use in animals:

This veterinary medicinal product is to be applied to the skin surface only. Do not administer orally or parenterally.

Keep treated animals away from fires and other sources of ignition for at least 30 minutes or until the hair coat is dry.

It is important to apply the dose as indicated to minimise the quantity that the animal can lick off. If significant licking does occur, a brief period of hypersalivation may rarely be observed in cats.

### Special precautions to be taken by the person administering the veterinary medicinal product to animals:

This product is highly flammable; keep away from heat, sparks, open flames or other sources of ignition.

Do not smoke, eat or drink while handling the product.

This product is a skin and eye irritant. Wash hands after use and wash off any product in contact with the skin immediately with soap and water. If accidental eye exposure occurs, flush the eyes immediately with water and seek medical advice immediately and show the package leaflet or the label to the physician.

Avoid direct contact with treated animals until the application site is dry. On the day of treatment, children must not handle treated animals and the animals should not be permitted to sleep with their owners, especially children. Used applicators should be disposed of immediately and not left within the sight or reach of children.

People with sensitive skin or known allergy to veterinary medicinal products of this type should handle the veterinary medicinal product with caution.

### Other precautions:

Do not allow treated animals to bathe in water courses until at least two hours after treatment administration.

### Pregnancy and lactation:

Can be used in pregnant and lactating cats and dogs.

### Fertility:

Can be used in breeding cats and dogs.

### Interaction with other medicinal products and other forms of interaction:

None known.

### Overdose (symptoms, emergency procedures, antidotes):

No undesirable effects were observed after the administration of 10 times the recommended dose of selamectin. Selamectin was administered at 3 times the recommended dose to cats and dogs infected with adult heartworms and no undesirable effects were observed. Selamectin was also administered at 3 times the recommended dose to breeding male and female cats and dogs, including pregnant and lactating females nursing their litters and at 5 times the recommended dose to ivermectin-sensitive Collies, and no undesirable effects were observed.

## **13. SPECIAL PRECAUTIONS FOR THE DISPOSAL OF UNUSED PRODUCT OR WASTE MATERIALS, IF ANY**

Medicines should not be disposed of via wastewater.

Selamectin may adversely affect fish or certain water-borne organisms on which they feed.

Containers and residual contents should be disposed of along with collected domestic refuse to avoid contamination of any water courses.

#### **14. DATE ON WHICH THE PACKAGE LEAFLET WAS LAST APPROVED**

Detailed information on this veterinary medicinal product is available on the website of the European Medicines Agency (<http://www.ema.europa.eu/>).

#### **15. OTHER INFORMATION**

The product is available in packs of one, four and twenty-four pipettes (all pipette sizes).

Not all pack sizes may be marketed.

For any information about this veterinary medicinal product, please contact the local representative of the marketing authorisation holder.

##### **België/Belgique/Belgien**

VIRBAC BELGIUM NV  
Esperantolaan 4  
BE-3001 Leuven  
Tél/Tel : +32-(0)16 387 260

Tel: 32 (0) 10 47 06 35

##### **Република България**

VIRBAC S.A.  
1<sup>ère</sup> avenue 2065 m LID  
FR-06516 Carros  
Франция  
Тел: 33 (0) 4 92 08 73 00

##### **Česká republika**

VIRBAC  
1<sup>ère</sup> avenue 2065 m LID  
FR-06516 Carros  
France  
Tel: 33 (0) 4 92 08 73 00

##### **Danmark**

VIRBAC Danmark A/S  
Profilvej 1  
DK-6000 Kolding  
Tlf: +45 75521244  
T

##### **Deutschland**

VIRBAC Tierarzneimittel GmbH  
Rögen 20  
DE-23843 Bad Oldesloe  
Tel: 49 (4531) 805 111

##### **Lietuva**

VIRBAC  
1<sup>ère</sup> avenue 2065 m LID  
FR-06516 Carros  
Prancūzija  
Tel: +33-(0)4 92 08 73 00  
T

##### **Luxembourg/Luxemburg**

VIRBAC BELGIUM NV  
Esperantolaan 4  
BE-3001 Leuven  
Belgique / Belgien  
Tél/Tel: +32-(0)16 387 260

##### **Magyarország**

VIRBAC HUNGARY KFT  
Szent István krt.11.II/21.  
HU-1055 Budapest  
Tel: +36703387177  
Tel: 33 (0) 4 92 08 73 00

##### **Malta**

VIRBAC  
1<sup>ère</sup> avenue 2065 m LID  
FR-06516 Carros  
Franza  
Tel: 33 (0) 4 92 08 73 00

##### **Nederland**

VIRBAC NEDERLAND BV  
Hermesweg 15  
NL-3771 ND-Barneveld  
Tel: 31 (0) 342 427 127

**Eesti**

VIRBAC

1<sup>ère</sup> avenue 2065 m LID

FR-06516 Carros

Prantsusmaa

Tel: +33-(0)4 92 08 73 00

E-mail:

**Ελλάδα**

VIRBAC HELLAS A.E.

13<sup>ο</sup> χλμ Ε.Ο. Αθηνών - Λαμίας

EL-14452, Μεταμόρφωση

ηλ: Tel: +30 210 6219520

E-mail: [info@virbac.gr](mailto:info@virbac.gr)**España**

VIRBAC ESPAÑA, S.A.

Angel Guimerá 179-181

ES-08950 - Esplugues de Llobregat

(Barcelona)

Tel: + 34 (0) 93 470 79 40

**France**

VIRBAC

13<sup>ème</sup> rue LID

FR-06517 Carros

Tél : +33-(0)805 05 55 55

**Hrvatska**

VIRBAC

1<sup>ère</sup> avenue 2065 m LID

FR-06516 Carros

Francuska

Tel: 33 (0) 4 92 08 73 00

**Ireland**

VIRBAC

1<sup>ère</sup> avenue 2065 m LID

FR-06516 Carros

France

Tel: + 33 (0) 4 92 08 73 00

**Ísland**

VIRBAC S.A.

1<sup>ère</sup> avenue 2065 m LID

FR-06516 Carros

Frakkland

Simi: 33 (0) 4 92 08 73 00

**Italia**

VIRBAC SRL

Via Ettore Bugatti, 15

IT-20142 Milano

Tel: +39 02 40 92 47 1

**Norge**

VIRBAC Danmark A/S

Profilvej 1

DK-6000 Kolding

Tel: + 45 75521244

Tel: 33 (0) 4 92 08 73 00

**Österreich**

VIRBAC Österreich GmbH

Hildebrandgasse 27

A-1180 Wien

Tel: 43 (0) 1 21 834 260

**Polska**

VIRBAC Sp. o.o.

ul. Puławska 314

PL 02-819 Warszawa

Tel.: + 48 22 855 40 46

**Portugal**

VIRBAC DE Portugal LABORATÓRIOS LDA

R.do Centro Empresarial

Ed13-Piso 1- Esc.3

Quinta da Beloura

PT-2710-693 Sintra

Tel: 00 351 219 245 020

**România**

VIRBAC

1<sup>ère</sup> avenue 2065 m LID

FR-06516 Carros

Franța

Tel: 33 (0) 4 92 08 73 00

**Slovenija**

VIRBAC

1<sup>ère</sup> avenue 2065 m LID

FR-06516 Carros

Francija

Tel: 33 (0) 4 92 08 73 00

**Slovenská republika**

VIRBAC

1<sup>ère</sup> avenue 2065 m LID

FR-06516 Carros

Francúzsko

Tel: 33 (0) 4 92 08 73 00

**Suomi/Finland**

VIRBAC

1<sup>ère</sup> avenue 2065 m LID

FR-06516 Carros

Puh/Tel: 33 (0) 4 92 08 73 00



**Κύπρος**

VIRBAC HELLAS A.E.  
13<sup>ο</sup> χλμ Ε.Ο. Αθηνών - Λαμίας  
EL-14452, Μεταμόρφωση  
Τηλ.: +30 2106219520  
Tel: +357 24813333

**Latvija**

VIRBAC  
1<sup>ère</sup> avenue 2065 m LID  
FR-06516 Carros  
Francjia  
el: +33-(0)4 92 08 73 00E-mail:

**Sverige**

VIRBAC Danmark A/S Filial Sverige  
c/o Incognito AB  
Box 1027  
SE-171 21 Solna  
Tel: +45 75521244  
Tel: 33 (0) 4 92 08 73 00

**United Kingdom (Northern Ireland)**

VIRBAC  
1<sup>ère</sup> avenue 2065m LID  
FR-06516 Carros  
France  
el: + 33-(0)4 92 08 73 00Tel: 44 (0) 1359 243243